



 A division of IROC Energy Services Partnership

## **Installation Instructions Multi-point RTD System**

D0001756

Rev -

2010/07/07

Canada Tech  
105, 1437 - 47th Avenue N.E.  
Calgary, Alberta  
Canada T2E 6N7

Tel.: +1 403 232 1400  
Fax: +1 403 232 1401  
Email: [info@canadatech.com](mailto:info@canadatech.com)  
Web: [www.canadatech.com](http://www.canadatech.com)

## Contents

<b>GENERAL INSTRUCTIONS.....</b>	<b>1</b>
<b>MULTI-POINT RTD SYSTEM .....</b>	<b>2</b>
<b>INSTALLATION TOOLS AND EQUIPMEMT .....</b>	<b>3</b>
<b>INSTALLATION PROCEDURES.....</b>	<b>4</b>
<b>QC POINTS WHEN INSTALLING.....</b>	<b>4</b>
<b>INSTALLATION SAFETY .....</b>	<b>5</b>

## General Instructions

**SAFETY WARNING!**

Ensure that the power is off before connecting or disconnecting any wiring to or from the system.

- This equipment must be installed according to all local codes and regulations.

## Multi-point RTD System

Multi-Point RTD System consists of:

- 1, complete multi-point RTD coiled string.



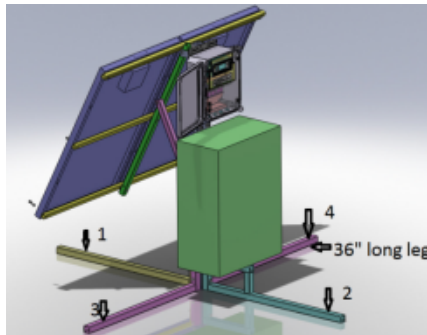
- 2, cable between wellhead termination to Dinlin3 box.



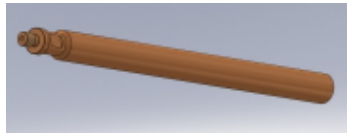
- 3, Dinline3 box.



- 4, Solar power system if needed (consists of stand, solar panel, battery box and control box. point 1 and point 2 are main loading points.)

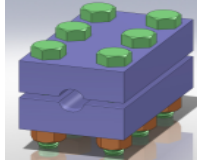


- 5, one weight bar. (OD  $\phi$ 2"X60"long, 40lb)



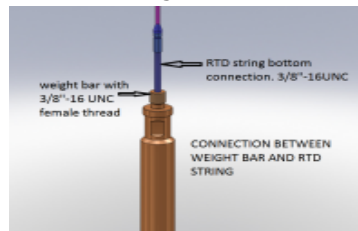
## Major Installation Tools and Equipment

- 1, 3/8", 5/8", 1", 1 1/8" and 1 1/2" wrenches.
- 2, mobile crane with at least 3000lb vertical lifting capacity at a given extended arm
- 3, open gate style sheave frame system.
- 3, drum and drum stand with a 2500ft-lb brake capacity.
- 4, 1/2" wellhead clamp. PN #108018

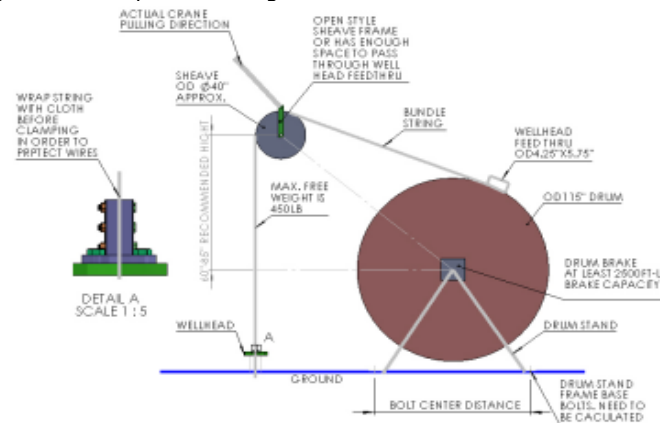


## Installation Procedures

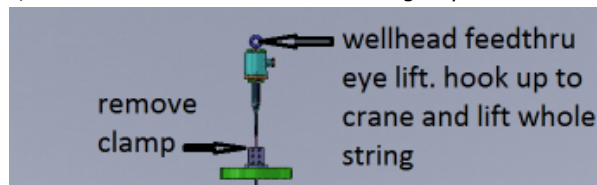
- 1, connect weight bar to the end of RTD string. Need 3/8" and 1 1/2" wrenches.



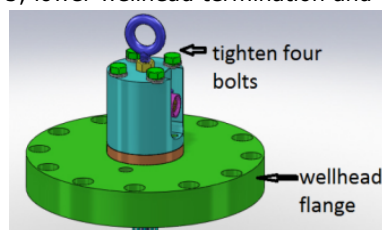
- 2, lower the RTD string through guiding sheave and speed is controlled by drum brake
- 3, when wellhead termination approaching, approximately 20-25feet above well head, clamp RTD string(wrap bundle with cloth) on to the wellhead. Lower sheave on the ground and open sheave gate.



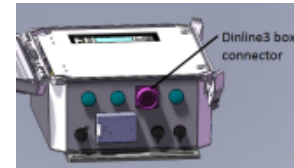
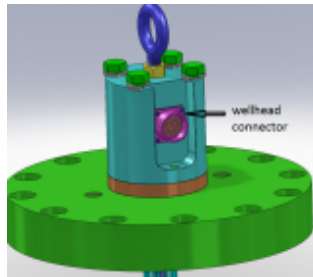
- 4, hook crane to wellhead feed through eye lift and lift whole string. remove clamp.



- 5, lower wellhead termination and tight four bolts. check seal bore and O-ring.

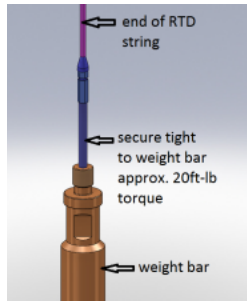


6, connect wellhead to Dinline3 box with cable provided.

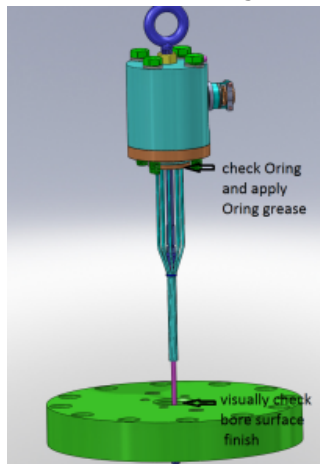


## QC Points when installing

1, secure tight weight bar to the end of RTD string. approx. 20ft-lb



2, check wellhead flange sealing surface and O-ring before lower wellhead feed through.



3, two cable connections

## Installation Safety

- 1, onsite personal must have adequate PPE before entering installation site
- 2, drum brake capability is at least 2500 ft-lb and pre-check before servicing.
- 3, service company needs a detail lifting plan and select proper mobile crane.
- 4, double check drum stand bolts make sure they are bolted securely to the solid base.
- 4, take extra care when seating wellhead feed through on wellhead flange.